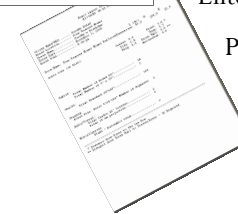
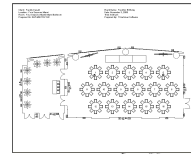


**Room Viewer®**  
**will enable you to easily produce**  
**quality event layouts.**  
**With Room Viewer you can**  
**impress your clients**  
**with professional event diagrams!**  
**Throw your eraser away**  
**because last minute layout changes**  
**are a snap!**  
**Order Room Viewer today.**

## **INTRODUCING THE ROOM VIEWER PRODUCTS**



Create event layouts that will dazzle your clients using one of the four Room Viewer products (Standard, Pro, Deluxe or Elite). Room Viewer is intuitive software for: Meeting Planners, Hotels, Caterers, Special Event Planners, Rental Companies, Schools, Conference Centers, Production and Audio Visual Companies.

## **TURN CLIENT PROPOSALS INTO CLIENT BUSINESS**

Presenting accurate, professional looking diagrams to your clients is a must to stay competitive. The quality diagrams produced with Room Viewer show your clients how their event will look. Once the client approves, pass the diagram along to the people setting up the event. The accompanying event inventory reports tally the exact items required to set up the function space and can be printed in your choice of English or Spanish. No more guess work!

## **QUICK, EASY AND COST EFFECTIVE!**

Designed by a meeting professional for ease of use, Room Viewer® offers quick, easy and cost effective ways to prepare event diagrams. Room Viewer makes site selection easier by quickly calculating “best fit” options such as the maximum number of seats a particular room can hold. Even if you can’t be on-site to manage the event, Room Viewer’s diagrams reduce the communications gap by showing the facility what you have in mind and allows the facility to set up your event according to your specifications.



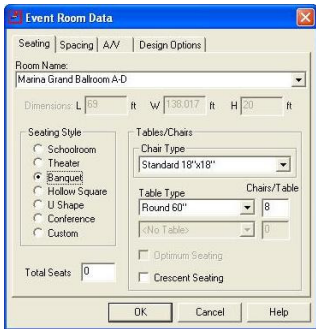
**SYSTEM REQUIREMENTS:** Room Viewer requires at least a Pentium III processor and 256mb of memory. This software runs on Microsoft Windows ME, Windows 200x, Windows XP and Windows Vista.

---

## ROOM VIEWER

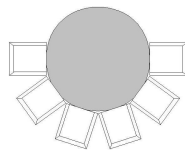
It doesn't matter whether you are indoors in a meeting room or outdoors in a tent - Room Viewer can create a diagram.

What about doing layouts in odd-shaped spaces? Using Room Schematic,™ an enhancement to Room Viewer Pro, Deluxe and Elite, you can create event spaces of any shape. Room Viewer uses these schematics to automatically generate diagrams that lay out your seating while avoiding obstacles in the space, such as columns, poles, counters, etc.



By answering simple questions on our unique fill-in-the-blanks Event Room Data form, Room Viewer can do 90% of the work automatically. All the basic elements for creating event layouts are right here. Once you have the basic layout you can use the convenient shape tool bar to insert shapes both inside the event space or out in the pre-function area.

Placing dimensions on you layouts can assist in communicating important distances. Room Viewer offers standard dimensions to indicate room and aisle sizing, or you can insert your own dimension line and the software will calculate and display the distance for you. And for those event planners who plan international events, simply tell Room Viewer to change to metric measurements.



With one click of the mouse you can convert your banquet diagrams from full rounds to crescent style seating for better audience viewing. Or ask Room Viewer to automatically stamp numbers on the tables using 16 unique patterns.

This software is even smart enough to warn you when you have violated fire code (Standard, Pro, Deluxe, and Elite). Don't see a shape you need in our library? Create your own intelligent shapes using the Shape Editing tool that comes with Pro, Deluxe or Elite.

---

## SEATING CHART

As any event planner knows, it can sometimes take days to place all the guests/ attendees of an event at the correct banquet tables. Uncle Henry wants to sit with his wife Phyllis, and their friend Sam Jones. Whether you're producing a wedding, fundraiser, corporate or association event, Seating Chart will help you track guests, meals and hosts. By linking the banquet diagram with your seating chart, you can visually display guest seating at each table and produce reports.

---

## ROOM VIEWER: SOFTWARE THAT THINKS LIKE YOU DO!

You don't have time to figure out new software, so you need the easiest to use software on the market today. Download and review the evaluation now and see how intuitive Room Viewer is.

---

For more information on Room Viewer, contact your Authorized Reseller of TimeSaver Software Products.



**Integrated Management  
Systems Ltd.**  
W5295 Hefty Road  
Monticello, WI 53570  
608-938-2501

## CHOOSING THE CORRECT ROOM VIEWER PRODUCT

### ROOM VIEWER STANDARD

Room Viewer Standard is designed for Corporate, Association and Independent Meeting Professionals who do medium size events. Perfect for facilities whose meeting spaces are rectangular in shape and only use standard furniture.

### ROOM VIEWER PRO

Room Viewer Pro is a high-powered product essential for Facilities, Event Planners, Caterers, Audio Visual and Production Companies who rely on a detailed schematic of the event space. Also, event planners who do more than 10% of their events in odd-shaped spaces or have a need to create customized shapes.

In addition to containing an interface for the Room Schematic and Seating Chart add-ons, Room Viewer Pro contains the Room Viewer Shape Editor. The Shape Editor offers users the ability to create custom shapes. Whether it's a new table, projector or screen, chair type, prop or some other specialty shape, users can draw it themselves. These intelligent shapes contain information such as throw distance for new projectors and distance between tables for new rounds.

### ROOM VIEWER DELUXE & ELITE

Room Viewer Deluxe and Elite have all the great features of Room Viewer Pro plus additional features especially valuable to AV companies and facilities (Deluxe) or Planners and Caterers (Elite). Room Viewer Deluxe can create front and side view elevations of the set space and can show the optimal viewing area for visual presentations for everyone in the meeting space, and comes with the Advanced Audio Visual Shapes Package. Room Viewer Elite packs a punch with our new Seating Chart add-on, and comes with both the Buffet Line and Catering Shapes Packages. Both Deluxe and Elite enable the importation of DXF CAD files for facilities and planners to speed the process of creating unique event space diagrams.

For a detailed comparison of Room Viewer Standard, Pro, Deluxe and Elite features, see the enclosed Room Viewer Product Comparison.

## ROOM VIEWER SHAPE PACKAGES

What makes an event layout tool valuable to your business? The ability to add customized shapes to your drawings, which are recognizable by your customers! That's why our talented artists have developed these specialty shape packages for your business.

**Package A - Advanced Audio Visual Shapes** If you are a production house, audio visual company, or an event planner, these shapes are for you! Some of the many shapes this package includes are:

- Truss (10')
- Projection Stands
- Video Camera
- Pars (Bar & Source 4)
- Video Rack
- Lekos (Bar & Light)
- Follow Spot
- Technician
- LCD Projectors
- Mixer Board
- Amp Rack
- Standing Microphone
- SM 57
- Genie Lift
- Mac 55
- Pin Spot Bar

**Package B - Buffet Serving Lines** Whether you're a facility, caterer or event planner, using any of these pre-configured serving lines will make your job easier. This package includes serving lines comprised of:

- Serpentine
- Half Rounds
- Rounds
- Quarter Rounds
- 6' x 30"
- 8' x 30"
- 6' x 18"
- 8' x 18"

**Package C - Catering Shapes** When your clients ask to see an individual table set or buffet serving line set, you'll be able to dazzle them by using these shapes to create the perfect diagram. This package include the following and more:

- Chafers
- Griddle
- Platters
- Plates
- Utensils
- Salt & Pepper
- Baskets
- Waiter Stand
- Napkins
- Cups
- Glasses
- Samovar

**Package D - Casino Shapes** These beautifully designed color casino shapes were created for casino companies and special event planners. The shapes come in several sizes to accommodate your specific needs. This package includes:

- Blackjack
- Poker
- Red Dog
- Craps
- Money Wheel
- Baccarat
- Roulette

**Package E - Game Shapes** If you are a company who rents inflatables and games, or a planner who does outdoor game events, these shapes are for you. There are over 50 shapes include, some of which are:

- Bounce House
- Bungee Run
- Carnival Tent
- Air Hockey
- Fly Trap
- Ellie the Elephant
- Keg Racers
- Golf Driving Range
- Sumo Wrestling
- Obstacle Course
- Mountain
- Slide
- Trampoline
- Water Wars
- Microreality Race Track

## ROOM VIEWER® PRODUCT COMPARISON

Features	Standard	Pro	Deluxe	Elite
Event Room Data Form	X	X	X	X
Room/ Aisle Dimension Lines	X	X	X	X
Text Labels	X	X	X	X
Shape Stamper	X	X	X	X
Automated A/V & Stage Placement	X	X	X	X
Metric/ English Units	X	X	X	X
Table Numbering	X	X	X	X
Seating Styles Included	7**	7**	7**	7**
Fire Code Warnings	X	X	X	X
Exporting PDF, JPEG, bmp	X	X	X	X
User Generated Dimension Lines	X	X	X	X
Automated Horizontal/ Cross Aisles	X	X	X	X
User Selectable Default Values	X	X	X	X
Automated Crescent Seating	X	X	X	X
Alignment and Snap Tools	X	X	X	X
Drawing Tools in Layout Screen	X	X	X	X
Event Inventory Report	X	X	X	X
Seating Chart Interface†	X	X	X	X
Shape Editor (Custom Shapes)		X	X	X
Diagrams in Color		X	X	X
Room Schematic™ Interface***		X	X	X
Network Version Available (Enterprise)		X	X	X
Automatic Front & Side View Elevations			X	
Optimal Viewing Areas			X	
Line of Sight			X	
Import DXF CAD Files			X	X
Advanced AV Shape Package			X	
Buffet Lines Shape Package				X
Catering Shapes Package				X
Seating Chart Add-on				X

\*\* Schoolroom, Theater, Banquet, U-Shape, Hollow Square, Conference and Custom seating styles.

\*\*\* Room Schematic is a module within Room Viewer Pro, Deluxe and Elite which creates permanent schematics of event spaces.

† Seating Chart is an add-on to Room Viewer Standard, Pro and Deluxe, but is bundled with Elite.

©2000-2008 TimeSaver Software. All Rights Reserved.

## ROOM VIEWER® PRICING

Product	License	# of Users	Retail Price US\$
<b>Room Viewer Standard</b>	<b>Single-User</b>	1	\$595.00
<b>Room Viewer Pro</b> (includes Room Schematic)	<b>Single-User</b>	1	\$995.00
<b>Room Viewer Deluxe</b> (includes Room Schematic/ DXF and Advanced AV Shapes)	<b>Single-User</b>	1	\$1495.00
<b>Room Viewer Elite</b> (includes Room Schematic/DXF Seating Chart, Buffet & Catering Shapes)	<b>Single-User</b>	1	\$1495.00
<b>Room Viewer Pro</b>	<b>Multi-User</b>	2	\$1195.00
		3	\$1395.00
		4	\$1595.00
		5+	\$200.00†
<b>Room Viewer Pro Enterprise</b>	<b>Network**</b>	3	\$1795.00
		4	\$1995.00
		5	\$2195.00
		6+	\$200.00†
<b>Room Viewer Deluxe</b> (includes Room Schematic/ DXF And Advanced AV Shapes)	<b>Multi-User*</b>	2	\$1695.00
		3	\$1895.00
		4	\$2095.00
		5+	\$200.00†
<b>Room Viewer Deluxe Enterprise</b> (includes Room Schematic/ DXF And Advanced AV Shapes)	<b>Network**</b>	3	\$2295.00
		4	\$2495.00
		5	\$2695.00
		6+	\$200.00†
<b>Room Viewer Elite</b> (includes Room Schematic/DXF Seating Chart, Buffet & Catering Shapes)	<b>Multi-User*</b>	2	\$1695.00
		3	\$1895.00
		4	\$2095.00
		5+	\$200.00†
<b>Room Viewer Elite Enterprise</b> (includes Room Schematic/DXF Seating Chart, Buffet & Catering Shapes)	<b>Network**</b>	3	\$2295.00
		4	\$2495.00
		5	\$2695.00
		6+	\$200.00†
<b>Room Viewer Shapes Packages</b>	Advanced AV, Catering Buffet Lines, Casino, Games 3 or more packages		\$79.95 each \$59.95 each
<b>Seating Chart</b>	<b>Single-User*</b>		\$295.00
	<b>Network**</b>		\$295.00

Prices listed above are for download ONLY. For software on a CD add \$25.00 plus \$10.00 (U.S. only) shipping and handling fee.

\* A Multi-User License is defined as the installation of Room Viewer on individual workstations within the same physical company location

\*\* A Network License is defined as the installation of Room Viewer on a single server system. **ALL** Licenses require an annual Maintenance Agreement. Contact your Room Viewer rep for pricing.

† Price for each additional user.

©2000-2008 TimeSaver Software. All Rights Reserved.